

## [The Write Place At the Write Time](#)

[Home](#)

[About Us](#)

[Announcements](#)

[Interviews](#)

[Fiction](#)

[Poetry](#)

["Our Stories" non-fiction](#)

[Writers' Craft Box](#)

[Writers' Contest!](#)

[Book Reviews](#)

[Exploration of Theme](#)

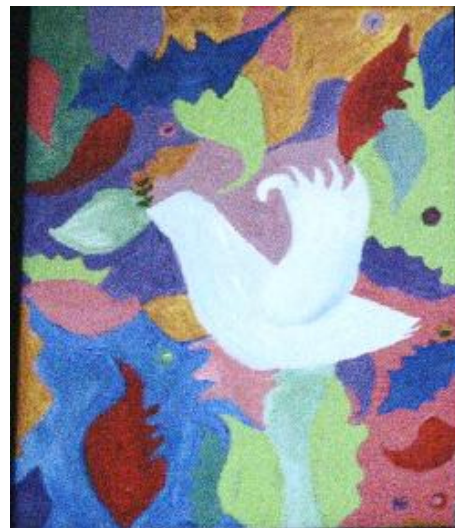
[Archives](#)

[Submission Guidelines](#)

[Feedback & Questions](#)

Come in...and be captivated...

Welcome to ***the write place at the write time***. Imagine that you are seated comfortably in a chic café with the décor of your choice. In the time it takes you to consume the generous warm mug of coffee or tea cradled between your hands, you can step into another world, abandon your senses and delve into another space and time. You do this by allowing a mysterious stranger to pull up a chair across from you and tell you a story. Close your eyes, listen to the words in your mind and be swept away...



"Peace" N.M.B Copyright 2007

### *Wonders of a Wintry Wonderland*

Let us begin by conveying our warmest season's greetings to you all! We look forward to another year together. As the snow alights the pines, we invite you into a world of whimsical, literary delights. Come discern myths and truths amongst captivating artwork which battles the insipid winter grays with brilliant strokes of curative color. Embrace the newness of a fresh start in the New Year, equipped with knowledge, hope and wisdom. In this time of frozen stillness, contemplate the gifts within and without that you wish to receive and give in the coming year and those to follow. Have lightness of spirit and remember to play in the snow. Let the magic begin!

This issue, we delve down deep into the ancient archetypes and artistry of storytelling through its evolutions from myths to fables to fairy tales and fantasy

literature. Award-winning author and editor, Terri Windling, founder of the Endicott Studio, has breathed life into entirely new genres through her pioneering efforts at major publishing imprints (Ace and Tor), creative organizations, anthologies, and her fiction works and art which have won world-wide acclaim, including nine World Fantasy Awards. In her capable hands, we embark on a whimsical journey of discovery. We question how our minds are structured and explore the ancient roots of storytelling that have yielded strong branches in modern society.

For a balance between the artistry/psychology of writing and the business aspect, we have a conversation with literary agent, Jeff Herman of The Jeff Herman Agency. Mr. Herman's annual guide to literary agents, *Jeff Herman's Guide to Publishers, Editors and Literary Agents* is an unprecedented, in-depth look at the publishing industry. Written up in publications such as *Entrepreneur*, *Publisher's Weekly* and *Forbes*, his innovative methods and perspectives shed light for writers on what was once the 'daunting unknown.' We bring back the human element to the business and dispel fact from fiction concerning the "how-to" aspect of writers getting their work out there to share with the world.

*Making Headlines:* We have a new **Announcements** page for ongoing issues- we love to celebrate and support our contributing artists and writers as they accomplish great things on their creative paths and we also like to give news of our publication to the readership. We encourage **all** contributing writers and artists to tell us of their news so that we can assemble a page that keeps updates on such news items. Additionally, we now have a **Book Reviews** page to which you are cordially invited!

Our Exploration of Theme page ponders the mysterious origins of one of the most famed melodies in history. Many of us know it as the Christmas hymn "What Child is This?", but "Greensleeves" comes from the sixteenth century with its original lyrics portraying a desperate love. Rumors abound that King Henry VIII had written it for Lady Anne Boelyn. Others contest that it is Elizabethan in origin. Come explore the themes yourself by viewing the lyrics (both the originals and those of the Christmas hymn), love letters from Henry to Anne and listening to the haunting melody.

We have "Writers' Craft Box" which is a section dedicated to giving writers' hints, tools, essays and advice. Think of it as an arts and crafts

box full of colors and inspiration... or an old toy chest discovered in the attic on a rainy day... This time we feature an essay on 7 great steps to stay in focus and a piece pondering negative space.

We have an ARCHIVES page where readers and writers can trace our artistic journey from the beginning and re-read the wisdom of writers such as best-selling novelists Janet Fitch, Alice Hoffman and more! We have a Feedback form which we *encourage* you to use and a new **Writers' Contest!** designed for you to check out- winners receive a \$25 gift certificate to Barnes & Noble bookstore.

We are a quarterly publication listed on the Poets & Writers site ([www.pw.org](http://www.pw.org)) under literary magazines. Clicking on our listing describes our publication, past issues, and our editorial focus.

Our next issue will be the spring issue, due out March 22nd. Submissions deadline for the spring issue is March 1st. Please check the submissions guidelines page before submitting and if you have any questions, please write to: [questions@thewriteplaceatthewritetime.org](mailto:questions@thewriteplaceatthewritetime.org)

"Writing is an adventure. To begin with, it is a toy and an amusement. Then it becomes a mistress, then it becomes a master, then it becomes a tyrant. The last phase is that just as you are about to be reconciled to your servitude, you kill the monster and fling him to the public..." -Winston Churchill

© 2009 *The Write Place At the Write Time*

This on-line magazine and all the content contained therein is copyrighted.

## [The Write Place At the Write Time](#)

[Home](#)

[About Us](#)

[Announcements](#)

[Interviews](#)

[Fiction](#)

[Poetry](#)

["Our Stories" non-fiction](#)

[Writers' Craft Box](#)

[Writers' Contest!](#)

[Book Reviews](#)

[Exploration of Theme](#)

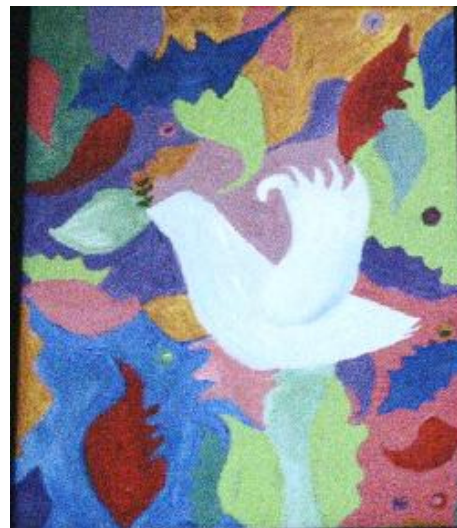
[Archives](#)

[Submission Guidelines](#)

[Feedback & Questions](#)

Come in...and be captivated...

Welcome to ***[the write place at the write time](#)***. Imagine that you are seated comfortably in a chic café with the décor of your choice. In the time it takes you to consume the generous warm mug of coffee or tea cradled between your hands, you can step into another world, abandon your senses and delve into another space and time. You do this by allowing a mysterious stranger to pull up a chair across from you and tell you a story. Close your eyes, listen to the words in your mind and be swept away...



"Peace" N.M.B Copyright 2007

### ***[Wonders of a Wintry Wonderland](#)***

Let us begin by conveying our warmest season's greetings to you all! We look forward to another year together. As the snow alights the pines, we invite you into a world of whimsical, literary delights. Come discern myths and truths amongst captivating artwork which battles the insipid winter grays with brilliant strokes of curative color. Embrace the newness of a fresh start in the New Year, equipped with knowledge, hope and wisdom. In this time of frozen stillness, contemplate the gifts within and without that you wish to receive and give in the coming year and those to follow. Have lightness of spirit and remember to play in the snow. Let the magic begin!

This issue, we delve down deep into the ancient archetypes and artistry of storytelling through its evolutions from myths to fables to fairy tales and fantasy

literature. Award-winning author and editor, Terri Windling, founder of the Endicott Studio, has breathed life into entirely new genres through her pioneering efforts at major publishing imprints (Ace and Tor), creative organizations, anthologies, and her fiction works and art which have won world-wide acclaim, including nine World Fantasy Awards. In her capable hands, we embark on a whimsical journey of discovery. We question how our minds are structured and explore the ancient roots of storytelling that have yielded strong branches in modern society.

For a balance between the artistry/psychology of writing and the business aspect, we have a conversation with literary agent, Jeff Herman of The Jeff Herman Agency. Mr. Herman's annual guide to literary agents, *Jeff Herman's Guide to Publishers, Editors and Literary Agents* is an unprecedented, in-depth look at the publishing industry. Written up in publications such as *Entrepreneur*, *Publisher's Weekly* and *Forbes*, his innovative methods and perspectives shed light for writers on what was once the 'daunting unknown.' We bring back the human element to the business and dispel fact from fiction concerning the "how-to" aspect of writers getting their work out there to share with the world.

*Making Headlines:* We have a new **Announcements** page for ongoing issues- we love to celebrate and support our contributing artists and writers as they accomplish great things on their creative paths and we also like to give news of our publication to the readership. We encourage **all** contributing writers and artists to tell us of their news so that we can assemble a page that keeps updates on such news items. Additionally, we now have a **Book Reviews** page to which you are cordially invited!

Our Exploration of Theme page ponders the mysterious origins of one of the most famed melodies in history. Many of us know it as the Christmas hymn "What Child is This?", but "Greensleeves" comes from the sixteenth century with its original lyrics portraying a desperate love. Rumors abound that King Henry VIII had written it for Lady Anne Boelyn. Others contest that it is Elizabethan in origin. Come explore the themes yourself by viewing the lyrics (both the originals and those of the Christmas hymn), love letters from Henry to Anne and listening to the haunting melody.

We have "Writers' Craft Box" which is a section dedicated to giving writers' hints, tools, essays and advice. Think of it as an arts and crafts

box full of colors and inspiration... or an old toy chest discovered in the attic on a rainy day... This time we feature an essay on 7 great steps to stay in focus and a piece pondering negative space.

We have an ARCHIVES page where readers and writers can trace our artistic journey from the beginning and re-read the wisdom of writers such as best-selling novelists Janet Fitch, Alice Hoffman and more! We have a Feedback form which we *encourage* you to use and a new **Writers' Contest!** designed for you to check out- winners receive a \$25 gift certificate to Barnes & Noble bookstore.

We are a quarterly publication listed on the Poets & Writers site ([www.pw.org](http://www.pw.org)) under literary magazines. Clicking on our listing describes our publication, past issues, and our editorial focus.

Our next issue will be the spring issue, due out March 22nd. Submissions deadline for the spring issue is March 1st. Please check the submissions guidelines page before submitting and if you have any questions, please write to: [questions@thewriteplaceatthewritetime.org](mailto:questions@thewriteplaceatthewritetime.org)

"Writing is an adventure. To begin with, it is a toy and an amusement. Then it becomes a mistress, then it becomes a master, then it becomes a tyrant. The last phase is that just as you are about to be reconciled to your servitude, you kill the monster and fling him to the public..." -Winston Churchill

© 2009 *The Write Place At the Write Time*

This on-line magazine and all the content contained therein is copyrighted.