

## [The Write Place At the Write Time](#)

[Home](#)

[About Us](#)

[Interviews](#)

[Fiction](#)

[Poetry](#)

["Our Stories" non-fiction](#)

[Writers' Craft Box](#)

[Writers' Contest!](#)

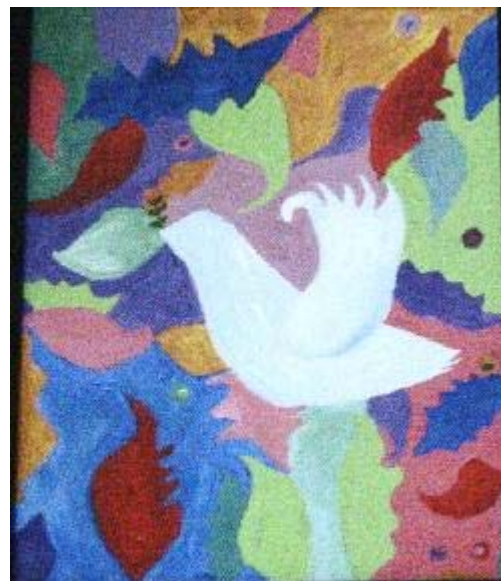
[Jungian Dream Corner](#)

[Submission Guidelines](#)

[Feedback & Questions](#)

### Come in...and be captivated...

Welcome to ***the write place at the write time***. Imagine that you are seated comfortably in a chic café with the décor of your choice. In the time it takes you to consume the generous warm mug of coffee or tea cradled between your hands, you can step into another world, abandon your senses and delve into another space and time. You do this by allowing a mysterious stranger to pull up a chair across from you and tell you a story. Close your eyes, listen to the words in your mind and be swept away...



"Peace" N.M.B Copyright 2007

### Season's Greeting to Our Writers and Readers

Welcome to our winter issue! Our quarterly publication includes not only fiction, non-fiction, poetry, original photos and artwork, but also interviews with professionals from the literary world as well as selected artists from other fields who use writing as a part of their craft.

This issue we have non-fiction author of *Making a Literary Life*, highly acclaimed novelist, UCLA professor, winner of the Robert Kirsch Body of Work Award and a Guggenheim Fellowship in fiction, and Washington Post Book Editor, Carolyn See, with us to give a no-holes barred perspective on the writer's life, highlighting what is a profession of passion, prolific beauty, and

me, highlighting what is a profession of passion, prolific beauty, and determination.

We have "Writer's Craft Box" which features writers' hints, tools and advice. Think of it as an arts and crafts box full of colors and inspiration... or an old toy chest discovered in the attic on a rainy day... In the spirit of excavating our authentic creative selves, we also have the Jungian Dream Corner where fellow readers and writers deciphered dreams from the last issue in keeping with the theme of a deeply artistic, creative and interactive environment, a Reader's poll of the fiction section, a Feedback form which we **encourage** you to use and a **new writers' contest feature** for you check out.

We are now listed on the Poets & Writers site ([www.pw.org](http://www.pw.org)) under literary magazines. Clicking on our listing describes our publication, past issues, and our editorial focus.

Keep warm this winter and enjoy our latest issue, filled to the brim with new content!

"There is always a moment in any kind of struggle when one feels in full bloom. Vivid. Alive. One might be blown to bits at such a moment and still be at peace... to be such a person or to witness anyone at this moment of transcendent presence is to know that what is human is linked, by a daring compassion, to what is divine"- Alice Walker, author of *The Color Purple*

© 2008 *The Write Place At the Write Time*

This on-line magazine and all the content contained therein is copyrighted.